

Western bean cutworm in Michigan

Helpful pictures from Oceana County, July 23, 2008

CDD #018
July 2009

Chris DiFonzo, Field Crops Entomologist
Michigan State University
East Lansing, MI 48824

Picture credits:
Chris DiFonzo

These pictures were taken in a WBC-infested field in Oceana County, 23 July, 2008. At least 30% of the plants in this field were infested with WBC egg masses or newly-hatched larvae.

These pictures can assist you in recognizing and scouting for WBC. Scouting for WBC is cost effective because infestations vary greatly from field to field.



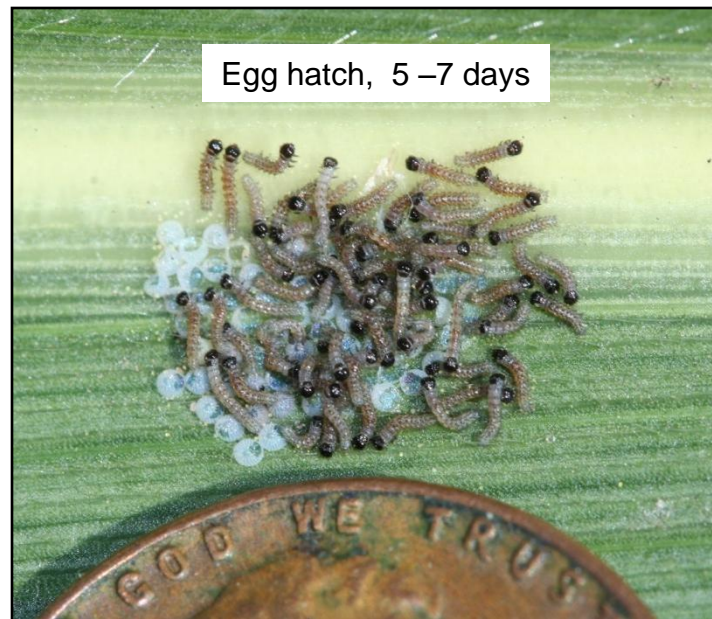
Fresh WBC egg mass



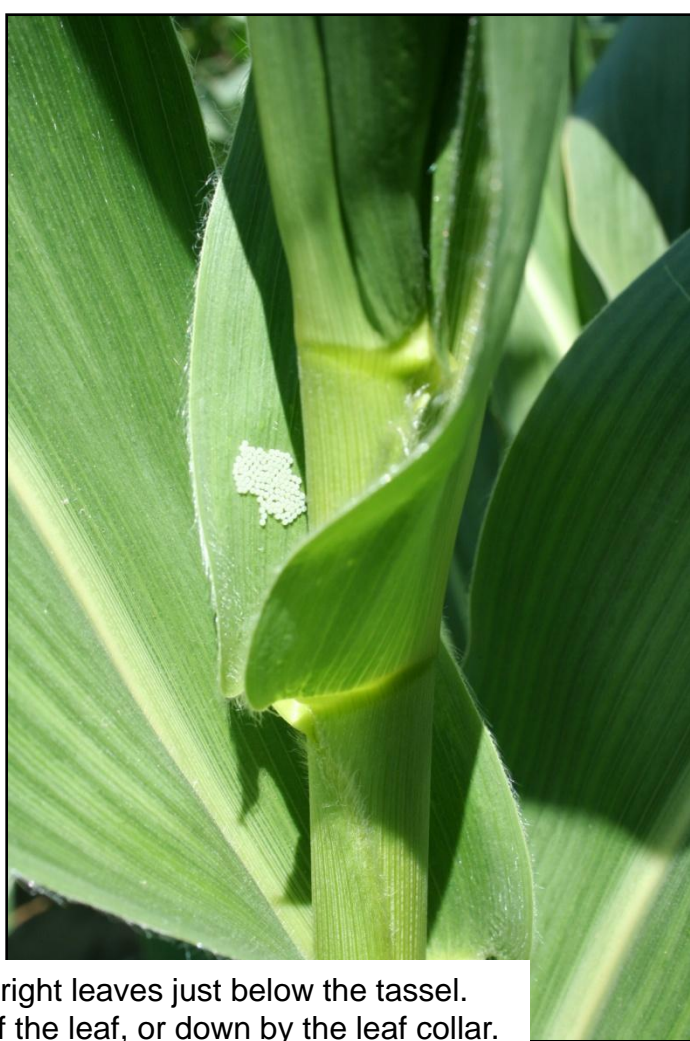
ECB egg mass for comparison.
Flat, shingle-like



WBC egg mass, 2-3 days old



Egg hatch, 5-7 days



Eggs are laid in upper canopy, on upright leaves just below the tassel. Laid on upper side of in the middle of the leaf, or down by the leaf collar.



Tip – if the sun is shining through leaves, look for the outline of eggs on the leaf underside.