

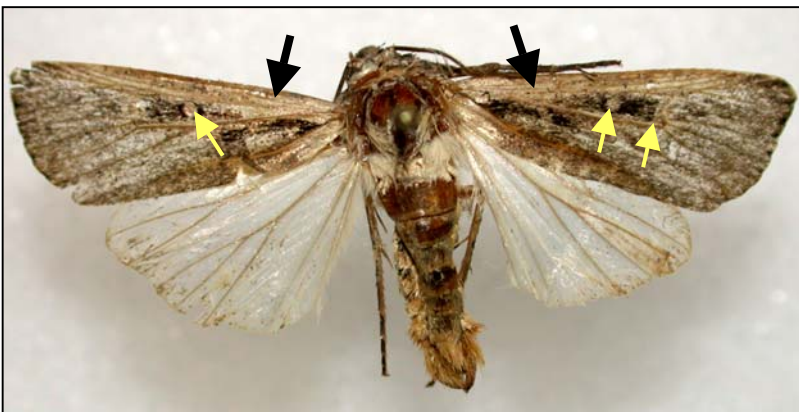
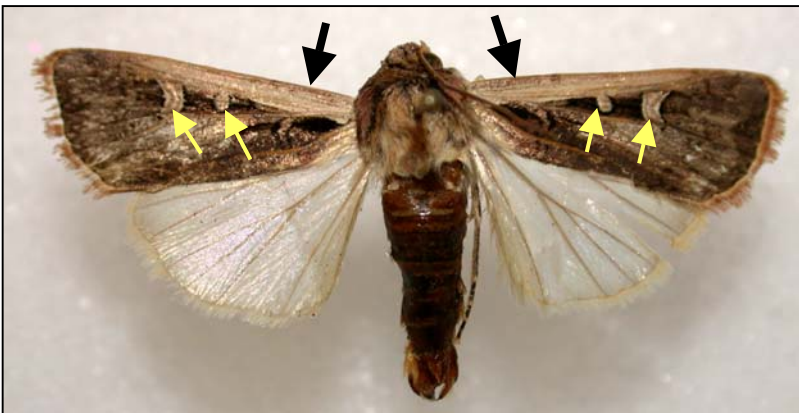
Realistic Western Bean Cutworm Moth Identification

(after it's been beat up and soaked in antifreeze)

✓ **WBC** - A "good" specimen. The main ID characteristics are clearly visible:

➔ Whitish stripe at the front margin of each forewing.
Even in bad specimens, the stripe, though faint, will be there.

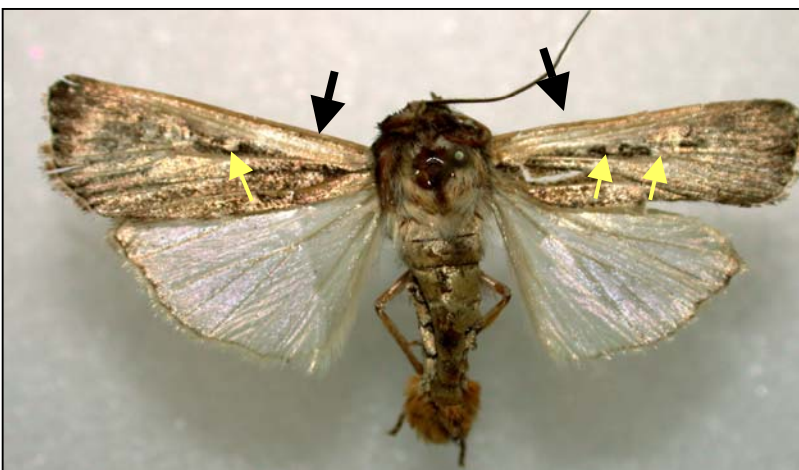
➔ Two white markings – a kidney bean/ **comma** and a small **circle**, on each forewing.



✓ **WBC**

A more typical specimen. Scales missing, less colorful.

You can still see part of one comma, both of the circles, and the stripes.



✓ **WBC**

Circles are present
Comma faint, but still present.

The stripes, even though subtle, are still visible at front of wing

-- **NOT WBC**

Forewing lacks the white bar and other identification marks.



Modified from the original designed by John Obermeyer, IPM Specialist, Purdue University